

ONVIF Profile S • PSIA • RTSP

**Windows 8 Ready**

**Free full version 32-ch NVR for all GeoVision IP Cameras**

**Megapixel IP Camera**



**DVR Hybrid DVR NVR**



**NVR System (Windows-based)**



**Standalone NVR (Linux-based)**



**Access Control**



**LPR/ANPR**



**PoE Switch**



**3D People Counter**



**HD-SDI**



**CMS**



**POS/ATM**



**Accessory**



[www.geovision.com.tw](http://www.geovision.com.tw)



**Taiwan**

GeoVision, Inc.  
9F., No. 246, Sec. 1,  
Neihu Rd., Neihu District,  
Taipei 114, Taiwan  
T: +886-2-8797-8376  
F: +886-2-8797-5861  
sales@geovision.com.tw  
<http://www.geovision.com.tw>



**USA**

USA Vision Systems, Inc.  
9235 Research Drive  
Irvine, CA 92618, USA  
T: +1-949-583-1519  
F: +1-949-583-1522  
sales@usavisionsys.com  
<http://www.usavisionsys.com>



**Europe | Czech**

Europe Vision Systems s.r.o.  
Pod vinicí 2028/20  
143 01 Praha 4  
Česká Republika  
T: +420-225-371-121  
F: +420-225-371-131  
sales@geovision.eu  
<http://www.geovision.eu>



**Europe | France**

French Office  
2 Allée Ernest NOUËL  
41100 VENDÔME  
T: +33-2-5480-1692  
technique@geovision.eu  
<http://www.geovision.com.tw/>  
FR/index.asp



**Japan**

GeoVision Japan Inc.  
Tomikabashi Bldg. 5F,  
2-6-11 Fukagawa Koto-ku,  
Tokyo 135-0033 Japan  
T: +81-3-5639-9355  
F: +81-3-5639-9356  
sales@geovision.co.jp  
<http://www.geovision.co.jp>



**China**

GeoVision Technology  
(Shanghai) Co., Ltd  
Room 504, 5/F, NO.700  
East Yanan Rd.  
Shanghai 200001, China  
T: +86-21-6217-3366  
F: +86-21-6217-0023  
sales@geovision.com.cn  
<http://www.geovision.com.cn>



**Brazil**

GeoVision do Brazil  
Av. Brigadeiro Luis Antônio,  
2729 Sl.910 Jardins,  
São Paulo, SP.  
Brasil Cep:01401-000  
T: +55-11-24767919  
F: +55-11-24767918  
contatos@geovision.com.br  
<http://www.geovision.com.tw>



**New****Full HD IP Speed Dome****GV-SD220 20x, 30x****Full HD IP Speed Dome**

- 25/30fps@1080p, 50/60 fps@720p
- Maximum 460 degree preset speed
- H.264, MJPEG
- 2-way audio
- WDR, Day/Night
- Outdoor model with IP66 and Arctic temperature control

**Standalone NVR****GV-NXB****Standalone NVR board (Linux)**

- 8/16 channels
- H.264, MJPEG, G.711, AAC
- 1080p/UXGA720p/VGA/4CIF/CIF
- 10/100/1000 Base-T
- HD 1080p, VGA D-sub
- Mic in, Headphone, Line out
- SATA 2.0 x 4
- USB 2.0 x 4
- USB Mouse, Keyboard, Joystick input

**GV-NXT****Standalone NVR Tower (Linux)**

- 8/16 channels
- H.264, MJPEG, G.711, AAC
- 1080p/UXGA720p/VGA/4CIF/CIF
- 10/100/1000 Base-T
- HD 1080p, VGA D-sub
- Mic in, Headphone, Line out
- SATA 2.0 x 4
- USB 2.0 x 4
- USB Mouse, Keyboard, Joystick input

**NVR System Lite****GV-NVR System Lite V2 (Rev. B)**

- Support up to 16 channels
- Compact and sleek
- Automatic connection to GV IP cameras
- Dual video streams
- VGA and HDMI outputs
- 1 TB hard drive
- Video analytics
- Standing mount and VESA mount options

**Tower NVR/DVR System****GV-Tower NVR/DVR System**

- Support for 32-channel GV-DVR & GV-NVR
- Support GPU Decoding
- 4-bay hot swap data HDD (up to 12 TB)
- Automatic connection to GV IP cameras
- Video analytics
- ONVIF and PSIA conformant
- Dual Gigabit LAN ports
- Dual monitor display (VGA and HDMI outputs)

**3D People Counter****GV-3D People Counter**

- Works with a 3D camera *Optional*
- High Accuracy
- Counts the number of visitors
- Integrated with GV-Web Report

**HD IP Decoder****GV-IP Decoder Box**

- Decodes up to 5MP, displays up to 1080P
- HDMI
- H.264
- RTSP streaming
- Sequential scan display
- IR Remote Control
- PTZ control
- VESA mount (Optional)

**GV-Pad**

- Display built-in with decoder
- 13" 1280 x 800 display
- Decode resolution: max 5MP
- H.264
- RTSP streaming
- Sequential scan display
- IR Remote Control
- PTZ control

**Super Low Lux Camera****Super Low Lux Camera**

- 1.3 Megapixel resolution
- Color: 0.05 Lux, B/W: 0.01 Lux, IR on: 0 Lux
- High color identification
- High sensitivity
- Supports 24hrs color mode without IR

**PoE Switch****GV-POE0800**

- 8-port 10M/100M (RJ45)
- IEEE 802.3at PoE+ up to 30W per port
- Total PoE power 130W
- 11" Metal Case

**GV-POE0801**

- 8-port 10M/100M (RJ45)
- 2-port Gigabit Uplink (RJ45 x 1, SFP x 1)
- IEEE 802.3at PoE+ up to 30W per port
- Total PoE power 130W
- 11" Metal Case
- Smart Web Configuration and Management
- PoE power ON/OFF control by NVR utility

**GV-POE1601**

- 16-port 10M/100M (RJ45)
- 2-port Gigabit Uplink (RJ45 x 2, SFP x 2)
- IEEE 802.3at PoE+ up to 30W per port
- Total PoE power 250W
- 19" Industrial Size
- Smart Web Configuration and Management
- PoE power ON/OFF control by NVR utility

**GV-POE2401**

- 24-port 10/100 Base-TX with PoE
- 2-port Gigabit Uplink (RJ45 x 2, SFP x 2)
- IEEE 802.3at PoE+ up to 30W per port
- Total PoE power 400W
- 19" Industrial Size
- Smart Web Configuration and Management
- PoE power ON/OFF control by NVR utility

**New****Full HD IP Speed Dome****GV-SD220** 20x, 30x**Full HD IP Speed Dome**

- 25/30fps@1080p, 50/60 fps@720p
- Maximum 460 degree preset speed
- H.264, MJPEG
- 2-way audio
- WDR, Day/Night
- Outdoor model with IP66 and Arctic temperature control

**Standalone NVR****GV-NXB****Standalone NVR board (Linux)**

- 8/16 channels
- H.264, MJPEG, G.711, AAC
- 1080p/UXGA720p/VGA/4CIF/CIF
- 10/100/1000 Base-T
- HD 1080p, VGA D-sub
- Mic in, Headphone, Line out
- SATA 2.0 x 4
- USB 2.0 x 4
- USB Mouse, Keyboard, Joystick input

**GV-NXT****Standalone NVR Tower (Linux)**

- 8/16 channels
- H.264, MJPEG, G.711, AAC
- 1080p/UXGA720p/VGA/4CIF/CIF
- 10/100/1000 Base-T
- HD 1080p, VGA D-sub
- Mic in, Headphone, Line out
- SATA 2.0 x 4
- USB 2.0 x 4
- USB Mouse, Keyboard, Joystick input

**NVR System Lite****GV-NVR System Lite V2 (Rev. B)**

- Support up to 16 channels
- Compact and sleek
- Automatic connection to GV IP cameras
- Dual video streams
- VGA and HDMI outputs
- 1 TB hard drive
- Video analytics
- Standing mount and VESA mount options

**Tower NVR/DVR System****GV-Tower NVR/DVR System**

- Support for 32-channel GV-DVR & GV-NVR
- Support GPU Decoding
- 4-bay hot swap data HDD (up to 12 TB)
- Automatic connection to GV IP cameras
- Video analytics
- ONVIF and PSIA conformant
- Dual Gigabit LAN ports
- Dual monitor display (VGA and HDMI outputs)

**3D People Counter****GV-3D People Counter**

- Works with a 3D camera *Optional*
- High Accuracy
- Counts the number of visitors
- Integrated with GV-Web Report

**HD IP Decoder****GV-IP Decoder Box**

- Decodes up to 5MP, displays up to 1080P
- HDMI
- H.264
- RTSP streaming
- Sequential scan display
- IR Remote Control
- PTZ control
- VESA mount (Optional)

**GV-Pad**

- Display built-in with decoder
- 13" 1280 x 800 display
- Decode resolution : max 5MP
- H.264
- RTSP streaming
- Sequential scan display
- IR Remote Control
- PTZ control

**Super Low Lux Camera****Super Low Lux Camera**

- 1.3 Megapixel resolution
- Color: 0.05 Lux, B/W:0.01 Lux, IR on:0 Lux
- High color identification
- High sensitivity
- Supports 24hrs color mode without IR

**PoE Switch****GV-POE0800**

- 8-port 10M/100M (RJ45)
- IEEE 802.3at PoE+ up to 30W per port
- Total PoE power 130W
- 11" Metal Case

**GV-POE0801**

- 8-port 10M/100M (RJ45)
- 2-port Gigabit Uplink (RJ45 x 1, SFP x 1)
- IEEE 802.3at PoE+ up to 30W per port
- Total PoE power 130W
- 11" Metal Case
- Smart Web Configuration and Management
- PoE power ON/OFF control by NVR utility

**GV-POE1601**

- 16-port 10M/100M (RJ45)
- 2-port Gigabit Uplink (RJ45 x 2, SFP x 2)
- IEEE 802.3at PoE+ up to 30W per port
- Total PoE power 250W
- 19" Industrial Size
- Smart Web Configuration and Management
- PoE power ON/OFF control by NVR utility

**GV-POE2401**

- 24-port 10/100 Base-TX with PoE
- 2-port Gigabit Uplink (RJ45 x 2, SFP x 2)
- IEEE 802.3at PoE+ up to 30W per port
- Total PoE power 400W
- 19" Industrial Size
- Smart Web Configuration and Management
- PoE power ON/OFF control by NVR utility

Fisheye

Cube

**New** **New** **New** **New**

GV-FE2301 2MP  
GV-FE4301 4MP  
GV-FE520/521 5MP  
GV-FE521 5MP **IP67 IK10 EN50133 EN50135**

GV-CB120 1.3MP  
GV-CB220 2MP  
GV-CA120 1.3MP **IP67 LED**  
GV-CA220 2MP **IP67 LED**  
GV-CAW120 1.3MP **IP67 LED WiFi**  
GV-CAW220 2MP **IP67 LED WiFi**

Box

**New** **New** **New** **New** **New** **Coming** **New** **New**

GV-BX1400W 1MP **WDR Pro**  
GV-BX1200 1.3MP **USB Low Lux**  
GV-BX1300 1.3MP **USB**  
GV-BX1500 1.3MP **USB Super Low Lux**  
GV-BX2400 2MP **USB WDR Pro**  
GV-BX2500 3MP **USB Low Lux**  
GV-BX3400 3MP **USB WDR Pro**  
GV-BX5300 5MP **USB**

Ultra Box

**New** **New** **New**

GV-UBX1501 1.3MP **Intelligent IR**  
GV-UBX2301 2MP **Intelligent IR**  
GV-UBX3501 3MP **Intelligent IR**

Arctic Box

**New** **New** **New** **New**

GV-BX1500-E 1.3MP **IP67 IK10 Arctic Low Lux**  
GV-BX2400-E 2MP **IP67 IK10 Arctic WDR Pro**  
GV-BX3400-E 3MP **IP67 IK10 Arctic WDR Pro**  
GV-BX5300-E 5MP **IP67 IK10 Arctic IR**

Bullet

**New** **New** **Coming** **New** **Coming** **New** **New** **Coming** **New** **Coming** **New** **New**

GV-BL1200 1.3MP **Intelligent IR IP67 IK10 Low Lux**  
GV-BL1300 1.3MP **Intelligent IR IP67 IK10**  
GV-BL1500 1.3MP **Intelligent IR IP67 IK10 Super Low Lux**  
GV-BL2400 2MP **Intelligent IR IP67 IK10 WDR Pro**  
GV-BL2500 2MP **Intelligent IR IP67 IK10 Low Lux**  
GV-BL3400 3MP **Intelligent IR IP67 IK10 WDR Pro**  
GV-BL1210 1.3MP **IP67 IK10 3x Zoom Low Lux**  
GV-BL1510 1.3MP **Intelligent IR IP67 IK10 3x Zoom Super Low Lux**  
GV-BL2410 2MP **Intelligent IR IP67 IK10 3x Zoom WDR Pro**  
GV-BL2510 2MP **Intelligent IR IP67 IK10 3x Zoom Low Lux**  
GV-BL3410 3MP **Intelligent IR IP67 IK10 3x Zoom WDR Pro**  
GV-BL5310 5MP **Intelligent IR IP67 IK10 3x Zoom**

Ultra Bullet

**New** **New** **New** **New** **New** **New**

GV-UBL1301 1.3MP **Intelligent IR IP67 IK10**  
GV-UBL2401 2MP **Intelligent IR IP67 IK10 WDR Pro**  
GV-UBL3401 3MP **Intelligent IR IP67 IK10 WDR Pro**  
GV-UBL1211 1.3MP **Intelligent IR IP67 IK10 3x Zoom Low Lux**  
GV-UBL2411 2MP **Intelligent IR IP67 IK10 3x Zoom WDR Pro**  
GV-UBL3411 3MP **Intelligent IR IP67 IK10 3x Zoom WDR Pro**

Mini Fixed Dome

**New** **New** **New** **Coming** **New** **New**

GV-MFD1301 1.3MP **USB**  
GV-MFD1501 1.3MP **USB Super Low Lux**  
GV-MFD2401 2MP **USB WDR Pro**  
GV-MFD2501 2MP **USB Low Lux**  
GV-MFD3401 3MP **USB WDR Pro**  
GV-MFD5301 5MP **USB**

Mini Fixed Rugged Dome

**Coming** **Coming**

GV-MDR120 1.3MP **IP67 IK10 EN50133 EN50135 3-axis Low Lux**  
GV-MDR220 2MP **IP67 IK10 EN50133 EN50135 3-axis**  
GV-MDR320 3MP **IP67 IK10 EN50133 EN50135 3-axis**  
GV-MDR520 5MP **IP67 IK10 EN50133 EN50135 3-axis**  
GV-MDR2400 2MP **IP67 IK10 EN50133 EN50135 3-axis WDR Pro**  
GV-MDR3400 3MP **IP67 IK10 EN50133 EN50135 3-axis WDR Pro**

Fixed Dome

**New** **New** **New** **New** **New** **New** **New**

GV-FD1200 1.3MP **IP67 IK10 Low Lux 3-axis**  
GV-FD2400 2MP **Intelligent IR IP67 IK10 WDR Pro 3-axis**  
GV-FD3400 3MP **Intelligent IR IP67 IK10 WDR Pro 3-axis**  
GV-FD1210 1.3MP **Intelligent IR IP67 IK10 3x Zoom Low Lux**  
GV-FD2410 2MP **Intelligent IR IP67 IK10 3x Zoom WDR Pro 3-axis**  
GV-FD3410 3MP **Intelligent IR IP67 IK10 3x Zoom WDR Pro 3-axis**  
GV-FD5300 5MP **Intelligent IR IP67 IK10 3-axis**

Vandal Proof Dome

**New** **New** **New** **New** **New** **New** **Coming** **Coming** **Coming**

GV-VD1200 1.3MP **Intelligent IR IP68 IK10+ 3-axis Low Lux**  
GV-VD2200 2MP **Intelligent IR IP68 IK10+ 3-axis**  
GV-VD3200 3MP **Intelligent IR IP68 IK10+ 3-axis**  
GV-VD1200 1.3MP **Intelligent IR IP67 IK10+ 3-axis Low Lux**  
GV-VD2400 2MP **Intelligent IR IP67 IK10+ 3-axis WDR Pro**  
GV-VD3400 3MP **Intelligent IR IP67 IK10+ 3-axis WDR Pro**  
GV-VD5300 5MP **Intelligent IR IP67 IK10+ 3-axis**  
GV-VD1210 1.3MP **Intelligent IR IP67 IK10+ 3x Zoom Low Lux**  
GV-VD2410 2MP **Intelligent IR IP67 IK10+ 3x Zoom WDR Pro**  
GV-VD3410 3MP **Intelligent IR IP67 IK10+ 3x Zoom WDR Pro**

PT/PTZ IP Cameras

**New** **New** **New**

GV-PT1300 1.3MP **Intelligent IR**  
GV-PT2200 2MP **Intelligent IR**  
GV-PT3200 3MP **Intelligent IR**  
GV-PTZ9100 D1 **Intelligent IR**

IP Speed Dome

**New 30x** **New 30x**

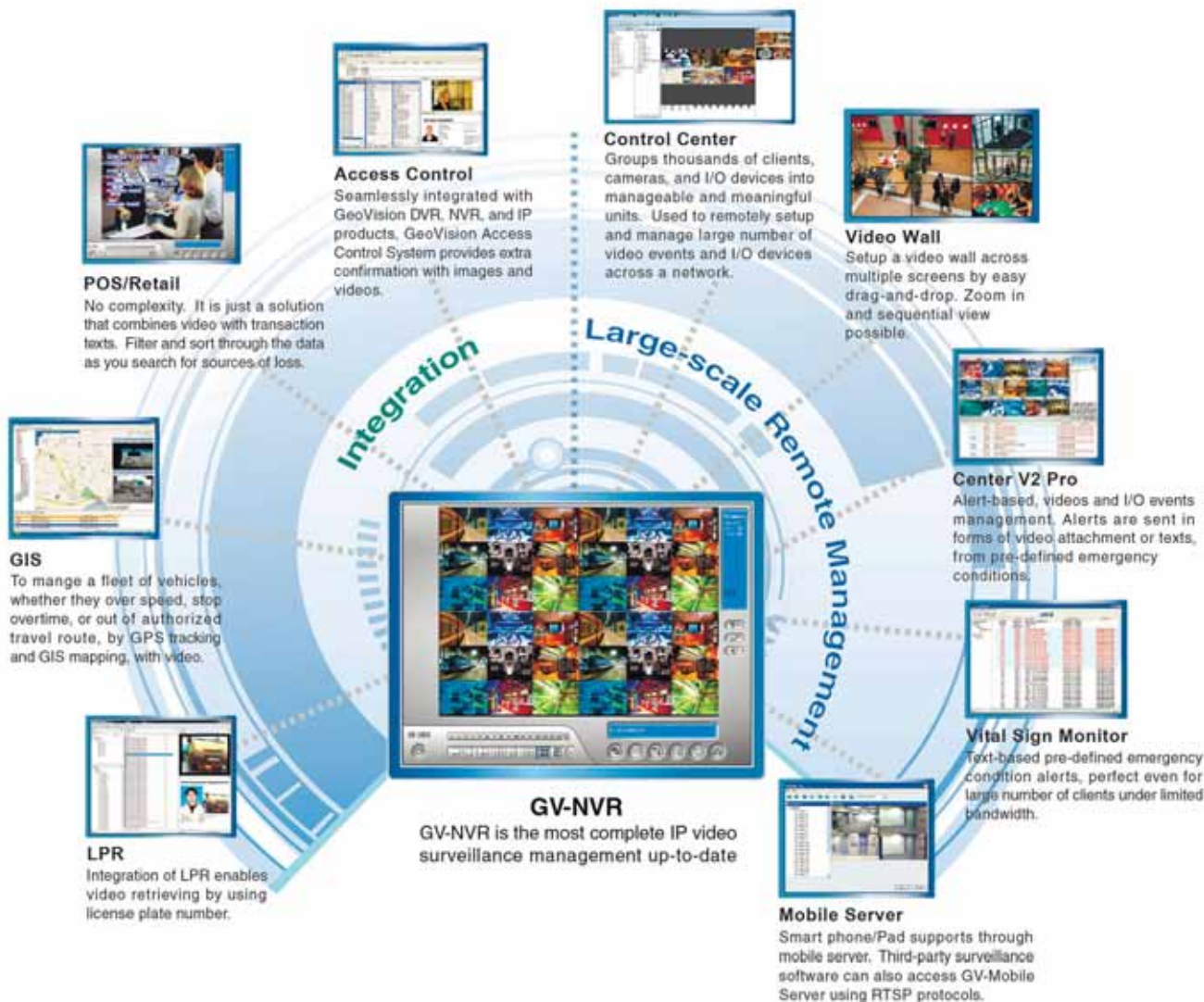
GV-SD610 D1 **18x, 27x, 36x WDR Pro**  
GV-SD610-S D1 **18x, 27x, 36x IP68 Arctic WDR Pro**  
GV-SD200 2MP **18x WDR**  
GV-SD200-S 2MP **18x WDR IP68 Arctic**  
GV-SD220 3MP **20x, 30x WDR**  
GV-SD220-S 3MP **20x, 30x WDR IP67 IK10 Arctic**

Video Server

GV-VS14 4-ch  
GV-VS12 2-ch  
GV-VS11 1-ch

Accessory for IP Cameras

GV-IR LED T2  
GV-PA191 PoE Adaptor  
WiFi USB Adaptor



## GV-DVR

### A Complete Line up of DVR Card

The DVR cards are designed to especially support GV-DVR/Hybrid DVR systems, to meet the surveillance industry's image standards. The selections are from 4 to 32 channels, at resolutions ranging from CIF to D1, Since the cards are specifically designed for GV-DVR/Hybrid DVR system, it truly brings out the high performance of the total solution.

#### GV-DVR cards

GV-600B



GV-650B



GV-800B



GV-900A



GV-1120B



GV-1240B



GV-1480B



GV-5016



## Accessory



**GV-NET I/O Card V3.1**

Provides 4 inputs and 4 AC/DC relay outputs.



**GV-I/O 12-In Card V3**

Provides 12 digital works with GV-NET/I/O Card.



**GV-NET Card V3.1**

RS-485/RS-232 interface converter.



**GV-COM V2**

Provides one RS-485 port through a USB port.



**GV-HUB V2**

Provides 4 RS-485 ports through a USB port.



**GV-IO Box 4/8E/16E**

Provides inputs and AC/DC relay outputs.



**GV-Relay V2**

Provides 4 digital relay outputs for GV-IP Camera and Video Server.



**GV-Data Capture V3/V3E**

For POS integration with optional Ethernet module.



**GV-Joystick**

Full control to the PTZ devices.



**GV-IR Remote Control**

Remote control for GV-System.



**GV-GPS Receiver**

For GIS mobile application.



**GV-Keyboard V3**

Controls up to 36 GV-Systems / GV-Control Center.

# POS Solution

GeoVision offers retailers POS solution to help in managing their store operations, and ultimately, improves profitability and performance.

## 1 Get a camera



**IP Camera**  
Get a megapixel IP camera for clear view. Additional function models (WDR or Low Lux) may be chosen depending on installation site.

## 2 Get Transaction



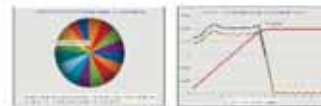
**GV-Data capture box**  
Transactions are transmitted to the video surveillance unit.

## 3 Overlay onto transaction



**GV-DVR/NVR**  
Transactions on video help retailers filter and sort through the data for sources of loss.

## 4 Visitor count report



**GV-Web Report**  
Collects visitor count across network, to aid market study and advertising plans.

# Fisheye

## GV-FER521



5MP IK06 IP66  
EN50155

A single GeoVision Fisheye IP camera can provide a 360 degree view which traditionally requires at least 4 cameras for full coverage. With the enhanced digital object tracking feature, enabled through GeoVision's free NVR software, it tracks people/objects in motion.



Object Tracking in Fisheye

# Smartphones and Tablets



Smartphone and tablet-based apps are usefully for control and monitoring security from home and anywhere in an office building. Watch live or playback surveillance video is now made easy with handheld devices.

GV Mobile Apps supports Android and iOS. To view in Android (smartphones and tablets), use GV-Eye App for GeoVision IP devices, and GV-AView App for GeoVision NVR/DVR operating on a PC. To view in iOS (iPhone, iPod Touch and iPad), use GV-Eye/Eye HD Apps for GeoVision IP devices, and GV-iView/GV-iView HD App for GeoVision NVR/DVR.

# Edge Recording



Easy and cost-effective way to deploy multiple video surveillance units without dedicated DVR/NVR servers. Instead of configure individually, Edge Recording sets up and manages multiple IP units in a single PC. With Edge Recording, video is captured and stored directly to the camera itself, either locally to a SD card, or through network shares such as NAS (network Attached Storage).

# Redundant and Failover Solution



GV-Redundant Server is used when large number of IP video needed to be securely backed up as another copy to a remote location. It can record up to 128 IP channels of the connected GV-System hosts. GV-Failover Server may be the alternative option if a backup copy is needed only in case of system or network issues. Support for remote configuration and monitoring of GV-Redundant Server/GV-Failover Server using Internet Explorer, Firefox, Google Chrome and Safari.

# GV-Access Control

GeoVision Access Control System is an easy-to-use, video-integrated, and networked access control solution, suitable for home, small businesses and even multinational enterprises. The comprehensive management software package provides seamless integration with GeoVision DVR, NVR and IP products, which gives you easy access to both live and recorded video from any access event.

## GV-ASManager



- Comprehensive administrator / cardholder / schedule / access point management system
- Manages up to 255 Controllers
- Supports Microsoft Access database and SQL Server
- Video integration with GeoVision DVR Series / GV-Compact DVR / GV-Video Server / GV-IP camera / 3rd-party IP camera
- Real-time door status monitoring, 16-screen multiview
- Web interface for historical log search with synchronized video and snapshot

## GV-ASRemote



- Controls multiple GV-ASManagers installed at various locations - suitable for central control monitoring purpose
- Remote monitoring, remote live multiview, and remote playback and door / alarm operation
- Access to log data and synchronized video playback anywhere via the Internet
- Report export in Excel / Text / HTML file formats
- Supports Remote Add Card Feature
- Supports Visitor Card Feature
- Supports Visitor Management
- Supports Time and Attendance Management

## Controller

Product Name	GV-AS210	GV-AS400	GV-AS810
Picture			
Number of door	4	4	8
Communication	TCP/IP Only	TCP/IP Only	TCP/IP Only
Event buffer	1,000,000	65,536	1,000,000
Number of Cards	40,000	40,000	40,000
Number of Readers	Wiegand x 4 RS-485 x 8	Wiegand x 8 RS-485 x 8	Wiegand x 8 RS-485 x 8
Extend Device	N/A	GV-ASKeyPad, Cabinet, Extend I/O Device (GV-IOBOX 4, 8, 16) x 4	Cabinet
Card Bit	26-64	26-64	26-64
Number of I/O Devices	Input x 8, Output x 8	Input x 16, Output x 16	Input x 16, Output x 24

## Reader with Controller

Product Name	GV-AS100	GV-AS110	GV-AS120
Picture			
Number of door	1		
Communication	RS-485 TCP/IP (Optional : GV-ASBox, GV-ASNet)		
Event buffer	40,000 1,000 : Single		
Number of Cards	65,536		
Number of Readers	Wiegand x 1 RS-485 x 4 (Optional : GV-ASBox) RS-485 x 2 (Optional : GV-ASNet)		
Extend Device	GV-ASBox extend I/O (Input x 8, Output x 8)		
Card Bit	26-64		
Number of I/O Devices	GV-AS100 : Input x 3, Output x 2 GV-AS110 : Input x 3, Output x 2 GV-AS120 : Input x 2, Output x 1		

## Reader

Product Name	GV-Reader 1251	GV-Reader 1352	GV-R1352	GV-DFR1352	GV-RK1352
Picture					
Communication	Wiegand 26 RS-485	Wiegand 26 RS-485	Wiegand 26 RS-485	Wiegand 26 RS-485	Wiegand 26 RS-485
Frequency	125 KHz	13.56 MHz	13.56 MHz	13.56 MHz	13.56 MHz
Card / Tag Type	E	M/F	M/F	M/F	M/F
Environment	-20 ~ 65°C / -4 ~ 149°F (IP54)	-20 ~ 65°C / -4 ~ 149°F (IP54)	-20 ~ 65°C / -4 ~ 149°F	-20 ~ 65°C / -4 ~ 149°F	-20 ~ 65°C / -4 ~ 149°F
Card / Tag Reading Distance	4 / 3 cm	5 / 4 cm	4 / 2.5 cm	4 / 2.5 cm	4.5 / 2.5 cm

## Fingerprint Reader

Product Name	GV-GF1911	GV-GF1912
Picture		
Communication	Wiegand 26 RS-485, TCP/IP	Wiegand 26 RS-485, TCP/IP
Frequency	13.56 MHz	13.56 MHz
Card / Tag Type	F	F
Environment	0 ~ 65°C / 32 ~ 149°F	0 ~ 65°C / 32 ~ 149°F
Card / Tag Reading Distance	3 cm	2.5 cm

## Accessory

### GV-ASBox



- Adds network function to GV-AS100 / AS110 / AS120
- Web interface configuration
- Extendable to 8 inputs and 8 outputs (programmable)
- 4 outputs for lighting on/off control (energy saving)
- One extra Wiegand reader port (26-64 bits)
- One extra door control (Works with GV-AS100 / AS110 / AS120)

### GV-ASNet



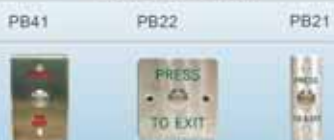
- Add TCP/IP networking capability to GV-AS100 / AS110 / AS120
- Access GV-AS100 / AS110 / AS120 through Web-based interfaces
- Support 2 units of GV-Readers and GV-GF Fingerprint Readers

### GV-AS ID Cards & GV-AS Tag



- 125kHz Card / Tag
- 13.56MHz ISO14443A Card / Tag

### Push Button Switch



### Non Push Button



### Electric Lock



GeoVision LPR/ANPR product line provides a total solution for License Plate Recognition. It provides both analog and IP solution for parking lot, logistics fleet management, traffic control ITS and police enforcement applications. The solution can seamlessly integrate with GeoVision surveillance system.



## GV-LPR



GV-LPR is a Windows-based license plate recognition system that supports both analog and IP cameras.

- Recognizes vehicles up to speed of 125mph/200kmph
- Supports up to 8 motion mode lanes, 8 I/O mode lanes or 255 GV-DSP LPR lanes
- Black list and white list for different actions
- Supports 254 schedules, 10,000 access groups and holiday
- Supports Microsoft Access Database and SQL Server
- Supports 3 overview cameras for each channel
- Seamless integration with GV-Series DVR/NVR for video retrieving

## GV-DSP LPR V3



GV-DSP LPR V3 is a DSP Linux embedded compact box for outdoor application.

- Linux-based solution for 1 port traffic or mobile license plate recognition
- Wide operating temperature range -20~55 °C (-4~131 °F)
- Recognition triggered by software motion detection or I/O device
- Hardware watchdog, digital watermark
- Offline backup upon internet disconnection with Micro SD card
- Supports USB interface UMTS modem
- Provides SDK for integration

GV-LPRCAM and GV-Hybrid LPR CAM are weatherproof 24/7 LPR/ANPR IR cameras specially designed for the reflective license plates.

## GV-LPR CAM 10 GV-LPR CAM 20



- Built-in powerful IR LED illuminator
- Built-in always-on blower
- Weatherproof (IP66 standard)
- Sun-shield
- Distance cover range from 7m~25m (23ft~82ft)

## GV-Hybrid LPR CAM10R



- Hybrid Video output: 1.3MP IP streaming + D1 CVBS
- Built-in powerful IR LED illuminator with Intelligent IR technology
- Built-in heater & fan, wide range of temperature operation
- Weatherproof (IP66 standard)
- Distance cover 8m~12m (26ft~39ft)



# Application Servers

To meet unique demands of large scale installations, GeoVision provides several application servers to make storage and redundant easy. All servers, by request, could come with the purchased application pre-loaded.

GV-Redundant Server



GV-Recording Server



GV-Failover Server



Server selection



4U, 20-bay



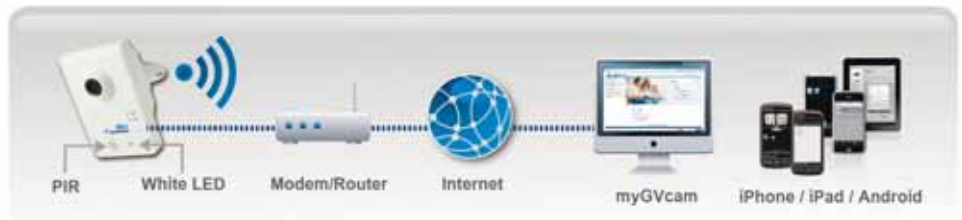
3U, 16-bay



3U, 8-bay

# Home Surveillance

PIR sensor • Illumination LED • Mobile connection



# HD-SDI Solution



**GV-SDI-204**

HD-SDI H/W Compression Card

- 4 ch Video Input, 8 DI/DO
- BNC Input Connector
- H.264, MPEG4, MJPEG
- 1080p/720p Resolution
- Recording Frame Rate up to 30fps



**GV-SDI-BX100**

HD-SDI Box Camera

- 1080P60, 1080P30, 720P60, 720P30
- Low Lux, WDR
- DC Drive Iris Control
- C/CS Mount
- RS-485 / RS-422 Remote Control



**GV-SDI-FD100 *New***

HD-SDI IR Fixed Dome Camera

- 1080P60, 1080P30, 720P30 720P30
- Low Lux, WDR
- Build-In IR

# GV-Video Analytics

GV-DVR, GV-Hybrid DVR and GV-NVR provide built-in Video Analytic functions.

People Counting



Intrusion Alarm



Face Mosaic



Face Counting



Face Masked Alarm



Focus Change Alarm



Tampering Alarm



Face Detection



Unattended Object Detection



Video Stabilization



GV-Web Report



Defog



Fix Camera + PTZ Tracking



Visual Automation



Intelligent Search



Panorama View



Digital Tracking



Crowd Detection



Missing Object Detection



Single PTZ Tracking



Wide Angle Lens Dewarping



Distributed By

